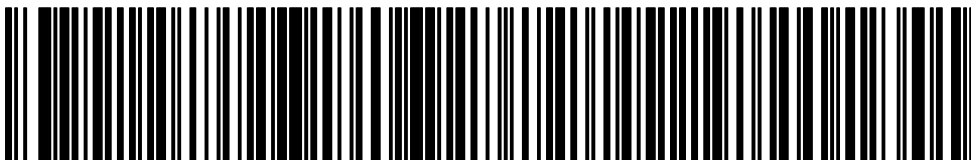
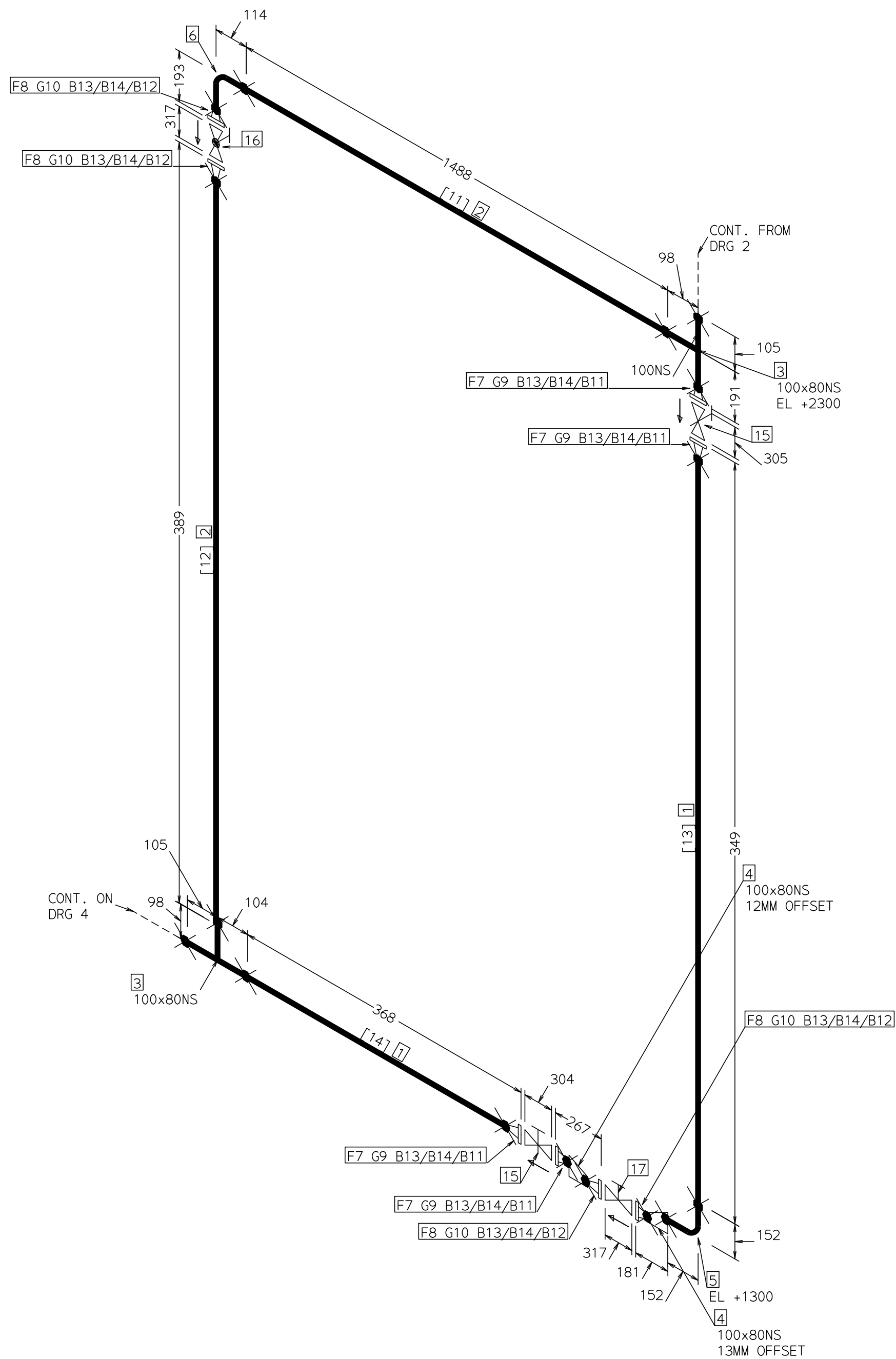


PT NO	COMPONENT DESCRIPTION	N.S. (MM)	ITEM CODE	QTY
PIPE				
1	PIPE SCH40 ANSI B36.10 API5L GR.B	100	PA100	6.4M
PT NO	COMPONENT DESCRIPTION	N.S. (MM)	ITEM CODE	QTY
FITTINGS				
2	TEE ANSI B16.9 BW SCH40 ASTM A234-WPB	100 x 100	TA100	1
3	NIPPLE SWAGED BEVEL X PLAIN ASTM A234-WPB	100 x 50	NS100X50	2
4	ELBOW 90DEG LR ANSI B16.9 BW SCH40 ASTM A234-WPB	100	EA100	2
FLANGES				
5	FLANGE WN ANSI B16.5 #300.RF ASTM A105	100	FWD100	4
6	FLANGE WN ANSI B16.5 #300.RF ASTM A105	50	FWD50	2
GASKETS				
7	GASKET RF 1.5MM ANSI B16.5 #300 SS & ASB	100	GC100	6
8	GASKET RF 1.5MM ANSI B16.5 #300 SS & ASB	50	GC50	2
BOLTS				
9	180 LONG STUD BOLTS ASTM A193-B7/2H	20	STUD180	16
10	110 LONG STUD BOLTS ASTM A193-B7/2H	20	STUD110	16
11	NUT ASTM A193-B7/2H	20	NUT	64
12	WASHER ASTM A193-B7/2H	20	WASH	64
13	80 LONG STUD BOLTS ASTM A193-B7/2H	16	STUD80	16
14	NUT ASTM A193-B7/2H	16	NUT	32
15	WASHER ASTM A193-B7/2H	16	WASH	32
VALVES / IN-LINE ITEMS				
16	VALVE WFR CHK MISSION K #300.RF ASTM A216-WCB	100	VCW100	2
17	VALVE GATE ANSI B16.10 #300.RF ASTM A216-WCB	100	VG100	2
PIPE SPOOLS				
[1] [2] [3] [4] [5] [6] [7]				
<div> 4''-AB-123456-IA-H30 SHT[1]</div>				
			SHT.1 OF5	
DRAWING NO. 4''-AB-123456-IA-H30			REV.	



PT NO	COMPONENT DESCRIPTION	N.S. (MM)	ITEM CODE	QTY
PIPE				
1	PIPE SCH40 ANSI B36.10 API5L GR.B	100	PA100	0.6M
2	PIPE SCH40 ANSI B36.10 API5L GR.B	80	PA80	1.8M
PT NO	COMPONENT DESCRIPTION	N.S. (MM)	ITEM CODE	QTY
FITTINGS				
3	TEE ANSI B16.9 BW SCH40 ASTM A234-WPB	100 x 80	TA100X80	2
4	REDU ECC ANSI B16.9 BW SCH40 ASTM A234-WPB	100 x 80	RE100X80	2
5	ELBOW 90DEG LR ANSI B16.9 BW SCH40 ASTM A234-WPB	100	EA100	1
6	ELBOW 90DEG LR ANSI B16.9 BW SCH40 ASTM A234-WPB	80	EA80	1
FLANGES				
7	FLANGE WN ANSI B16.5 #300.RF ASTM A105	100	FWD100	4
8	FLANGE WN ANSI B16.5 #300.RF ASTM A105	80	FWD80	4
GASKETS				
9	GASKET RF 1.5MM ANSI B16.5 #300 SS & ASB	100	GC100	4
10	GASKET RF 1.5MM ANSI B16.5 #300 SS & ASB	80	GC80	4
BOLTS				
11	110 LONG STUD BOLTS ASTM A193-B7/2H	20	STUD110	32
12	100 LONG STUD BOLTS ASTM A193-B7/2H	20	STUD100	32
13	NUT ASTM A193-B7/2H	20	NUT	128
14	WASHER ASTM A193-B7/2H	20	WASH	128
VALVES / IN-LINE ITEMS				
15	VALVE GATE ANSI B16.10 #300.RF ASTM A216-WCB	100	VG100	2
16	VALVE GLOBE ANSI B16.10 #300.RF ASTM A216-WCB	80	VH80	1
17	CTRL VALVE FISHER TYPE 657-ED #300.RF ASTM A216-WCB	80	AD80	1
PIPE SPOOLS				
[11] [12] [13] [14]				

