

Network DDE Shares

Contents

Network DDE Shares	1
Contents	1
About this document.....	1
Setting-up Network DDE Shares	2
To manually launch the DDE Share utility:	3
DDE Shares	4
To create a DDE Share	4
DDE Trusted Shares	6
To create a Trusted Share	6
To view the Trusted Shares	6

About this document

This document is an extract from the CitectHMI/SCADA online help and is valid as at print date. For the latest details, please refer to the latest copy of the full help from Citect. If you cannot find the information you need, you can obtain product support through the Citect distribution channels. Training and consulting services are also available upon request.

Before you call Customer Support, you must print out and forward the Citect Solution Request form, found at the Ci Technologies web site <http://www.citect.com>.

Setting-up Network DDE Shares

To be able to create a DDE link over a network, the computer serving as the Network DDE Server must be setup to provide a **Network DDE Share** to establish a network DDE Channel.

NOTE: You don't have to create a DDE Share if you are attempting to use DDE between applications running on the same machine. You only have to create a DDE Share if you intend to use DDE between two separate applications running on different machines. Then you only have to create the DDE Share on the machine that contains the application which will be the DDE Server.

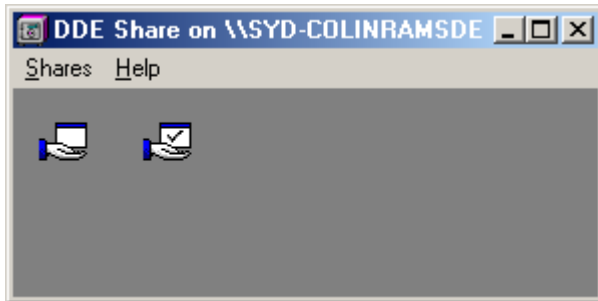
The Windows DDESHARE.EXE utility enables users to manage DDE shares. The 32-bit version is shipped with all Microsoft NT based operating systems (NTx, Windows 2000, Windows XP, and later), located in the WINNT\System32 sub-directory.

NOTE: For 16-bit based systems like Windows 95, Windows 98, Windows Me, and Windows For Workgroups, (according to MSDN Knowledge Base article Q181946) the original 16-bit Network DDE Share Manager version, (also named DDEShare.exe) can be found in the Microsoft Windows for Workgroups Resource Kit. As this file proved most difficult to locate, and for your convenience, a copy is also available from the Citect website toolbox:
www.citect.com/login

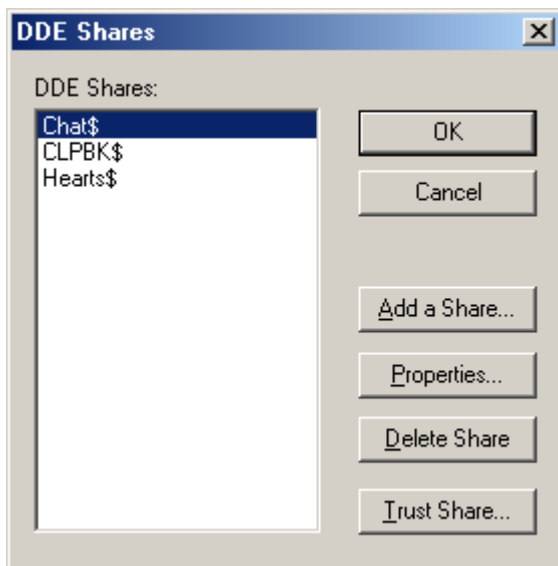
To manually launch the DDE Share utility:

- On the Windows Start menu, click **Start | Run**, type in "ddeshare" (without the quotes) and press the **Enter** key.

When the NT version of DDEShare.EXE is running, it displays the DDE Share utility window containing two icons which launch the DDE Shares dialog, and the DDE Trusted Shares dialog:



In the DDE Share utility, double-click on the left icon (without the tick) to launch the DDE Shares dialog:



The DDE Shares dialog is used to create, manage, and delete global DDE shares on your computer, and to view the DDE shares of any computer on the network.

NOTE: You can use this dialog to confirm the names of shares available on any machine on the same network. From the DDE Shares menu, select **Shares | Select Computer** and choose the computer name you're interested in from the list.

DDE Shares

There are three types of DDE shares: old style, new style, and static. CitectHMI/SCADA only supports the static type. The names of static shares follow the convention

<ShareName>\$

so to set-up a CitectHMI/SCADA Server computer as a Network DDE share, you should use the name "Citect\$" as the sharename on that computer. To expose the CitectHMI/SCADA runtime variable tag database for suitable DDE linking, use the word "Variable" as the DDE Share Topic name.

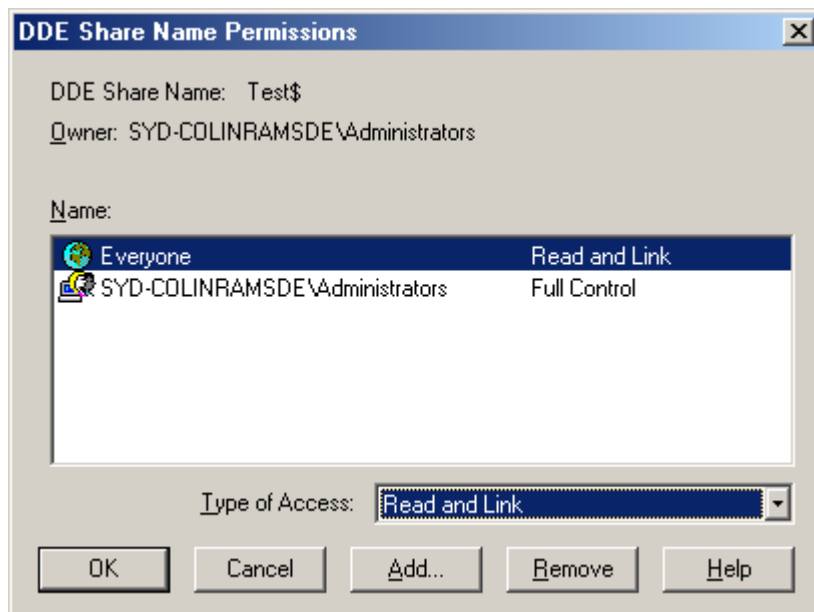
NOTE: The trailing dollar sign (\$) is required as part of the DDE share name syntax.

To create a DDE Share

1. On the DDE Shares dialog, click the 'Add a Share' button. The **DDE Shares Properties** dialog displays. Complete the fields exactly as displayed below:

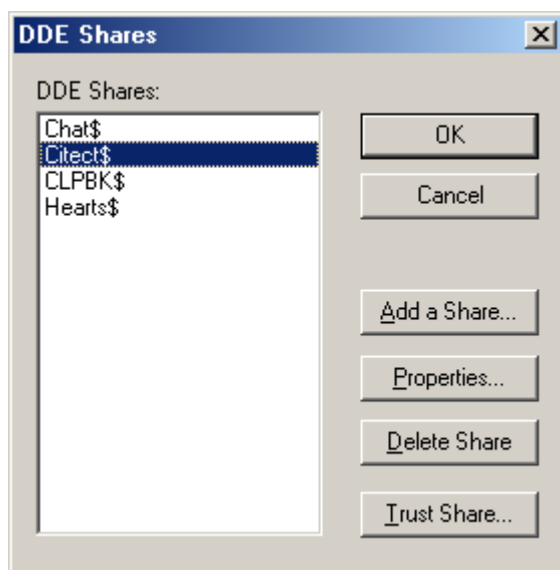
The screenshot shows the 'DDE Share Properties' dialog box. At the top, the 'Share Name' field is filled with 'Citect\$'. Below this, there are two columns: 'Application Name' and 'Topic Name'. Under 'Application Name', the 'Static' radio button is selected, and the text 'Citect' is entered in the field below it. Under 'Topic Name', the text 'Variable' is entered in the field below it. There are two checkboxes: 'Allow start application' (unchecked) and 'Is service' (unchecked). A note '[Use * to indicate all topics]' is present. In the 'Item Security' section, the 'Grant access to all items' radio button is selected. There is an 'Item:' field and a list box. At the bottom left are 'Add item' and 'Delete item' buttons. On the right side are 'OK', 'Cancel', 'Permissions...', and 'Help' buttons.

2. Click the **Permissions** button. The **DDE Share Name Permissions** dialog displays.



Read and Link is the default permission setting. Should you wish to write data to the DDE Share application, you should change the permission to **Full Control**.

3. Click **OK** to save the Permission, and return to the **DDE Shares Properties** dialog.
4. Click **OK** to save the Share, and return to the **DDE Shares** dialog.



DDE Trusted Shares

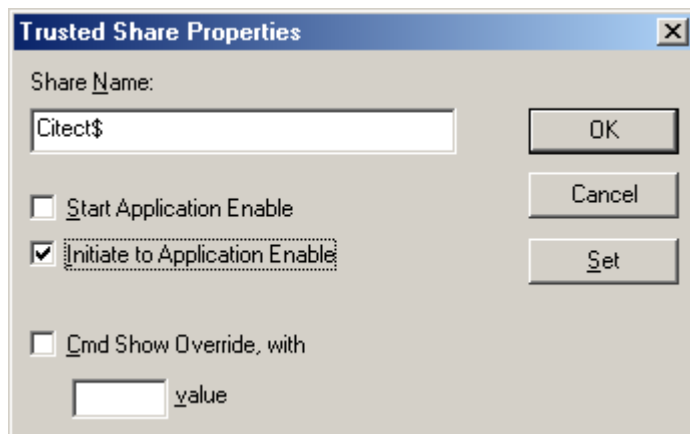
When a network DDE Client user connects to a network DDE Share from a remote computer, Network DDE accepts the request only if both:

- the user who created the share has granted trusted status to the share, and
- the user who created the share is currently logged on to the server computer.

To link to the CitectHMI/SCADA tag database, and permit write actions from an external application using Network DDE, the DDE Client computer must be granted appropriate Trusted status.

To create a Trusted Share

On the DDE Shares dialog, highlight the new 'Citect\$' share entry, and click the **Trust Share** button. This displays the Trusted Share Properties dialog:



Check **Initiate to Application Enable** as illustrated above, to allow new connections to the DDE share. Click **OK**.

To view the Trusted Shares

In the DDESHARE utility double-click on the right icon (with the tick) to launch the DDE Trusted Shares dialog.

The DDE Trusted Shares dialog lists the DDE shares that are trusted in the current user's context. You can view and modify trusted share properties and remove DDE shares from the list of trusted shares.

Once setup is completed, the DDE Share utility window can be closed.